



Effectiveness Evaluation of
Projects focused on the

Amazon Fund / BNDES Sustainable Productive Activities

| Portal Seeds – Phase II (IOV)

Julho de 2024





**EFFECTIVENESS EVALUATION OF PROJECTS FOCUSED ON THE
AMAZON FUND/BNDES SUSTAINABLE PRODUCTIVE ACTIVITIES**

PRELIMINARY EVALUATION REPORT

Project evaluated

Portal Seeds Phase II

Evaluators

Cecília Simões

Débora Almeida

July, 2024



Report on the Effectiveness Evaluation of Projects focused on the Amazon Fund/BNDES Sustainable Productive Activities

This report presents the ex post effectiveness evaluation results of the Amazon Fund/BNDES Sustainable Productive Activities. The referred to evaluation was performed by a team of women, who are independent consultants, under the coordination of the German Cooperation for Sustainable Development through *Deutsche Gesellschaft für Internationale Zusammenarbeit GmbH* (GIZ), as part of the technical cooperation with BNDES on the Amazon Fund. All opinions expressed herein are the sole responsibility of the authors, and do not necessarily reflect the position of GIZ and BNDES.

Evaluation team

Cecília Simões

Débora Almeida

Evaluation Coordination

(*Deutsche Gesellschaft für Internationale Zusammenarbeit – GIZ GmbH*)

Ester Maria Gomila Pons

Juliana Passos de Mello



Por meio de:



MINISTÉRIO DO
DESENVOLVIMENTO,
INDÚSTRIA, COMÉRCIO
E SERVIÇOS

MINISTÉRIO DO
MEIO AMBIENTE E
MUDANÇA DO CLIMA





Table of Contents

Project File	6
1. PROJECT SUMMARY.	7
2. INTERVENTION LOGIC.	8
3. SPECIFIC METHODOLOGY	9
4. PROJECT IMPLEMENTATION CONTEXT	9
5. EVALUATION OF THE RESULTS	10
6. ANALYSIS OF THE OECD EVALUATION CRITERIA AND REDD+ AND CROSS-CUTTING SAFEGUARDS	28
7. GENERAL EVALUATION	31
8. CONCLUSION AND LESSONS LEARNED	32

Acronyms

ADAI	Interstate Agricultural Development Association
ANATER	National Agency for Technical Assistance and Rural Extension
APP	Permanent Preservation Area
APS	Sustainable Productive Activities
ATER	Technical Assistance and Rural Extension
BNDES	Brazilian National Bank for Economic and Social Development
FA	Amazon Fund
GIZ	<i>Deutsche Gesellschaft für Internationale Zusammenarbeit GmbH</i>
INCRA	Brazilian National Institute of Colonization and Agrarian Reform
IOV	<i>Duro Verde</i> Institute
IPAM	Amazon Environmental Research Institute
MAB	Movement of People Affected by Dams
MMA	Brazilian Ministry of Environment and Climate Change
OECD	Organisation for Economic Co-operation and Development
PA	Settlement Project
PAA	Food Acquisition Program

PAB	<i>Alimenta Brasil</i> Program
PAS	Sustainable Settlements Project
PNAE	Brazilian National School Feeding Program
PPCDAM	Action Plan for the Prevention and Control of Deforestation in the Legal Amazon
PSA	Payment for Environmental Services
QL	Logical Framework
RAE	Effectiveness Evaluation Report
REDD+	Reducing Emissions from Deforestation and Forest Degradation (+ conservation, sustainable management of forests, and enhancement of forest carbon stocks in developing countries)
RSPA	Amazon Portal Seeds Network
SAFS	Agroforestry Systems
SISCOS	Solidarity Marketing System
SSP	Silvopastoral System
TDR	Terms of Reference
UFMT	Federal University of Mato Grosso
UNEMAT	State University of Mato Grosso
UNFCCC	United Nations Framework Convention on Climate Change



Portal Seeds Project – Phase II

Project File			
Project Title:	Portal Seeds – Phase II	Responsible organization:	Instituto Ouro Verde (IOV)
Project Period:	05/Dec/2013 – 16/Sep/2022	Territorial Coverage:	Eight municipalities in the region known as Portal da Amazônia, in the far north of Mato Grosso: Apicás, Alta Floresta, Carlinda, Colíder, Nova Canaã do Norte, Nova Guarita, Nova Santa Helena, Terra Nova do Norte
Beneficiaries:	Family Farmers		
Goals:	To support the recovery of degraded areas and the strengthening of family farming in the Portal da Amazônia region, in the state of Mato Grosso, by implementing and consolidating Agroforestry Systems (SAFs), planting and enriching agroforests, structuring channels for marketing products and seeds and carrying out research.		
Deadline:	71 months	Inclusion in the Amazon Fund via Component	Sustainable Production
Total value of the Project:	BRL 16,553,250.64	Amount of support from the Amazon Fund:	BRL 16,086,000.00
Hiring date:	05.Dec.2013	Date of completion:	16.Sep.2022

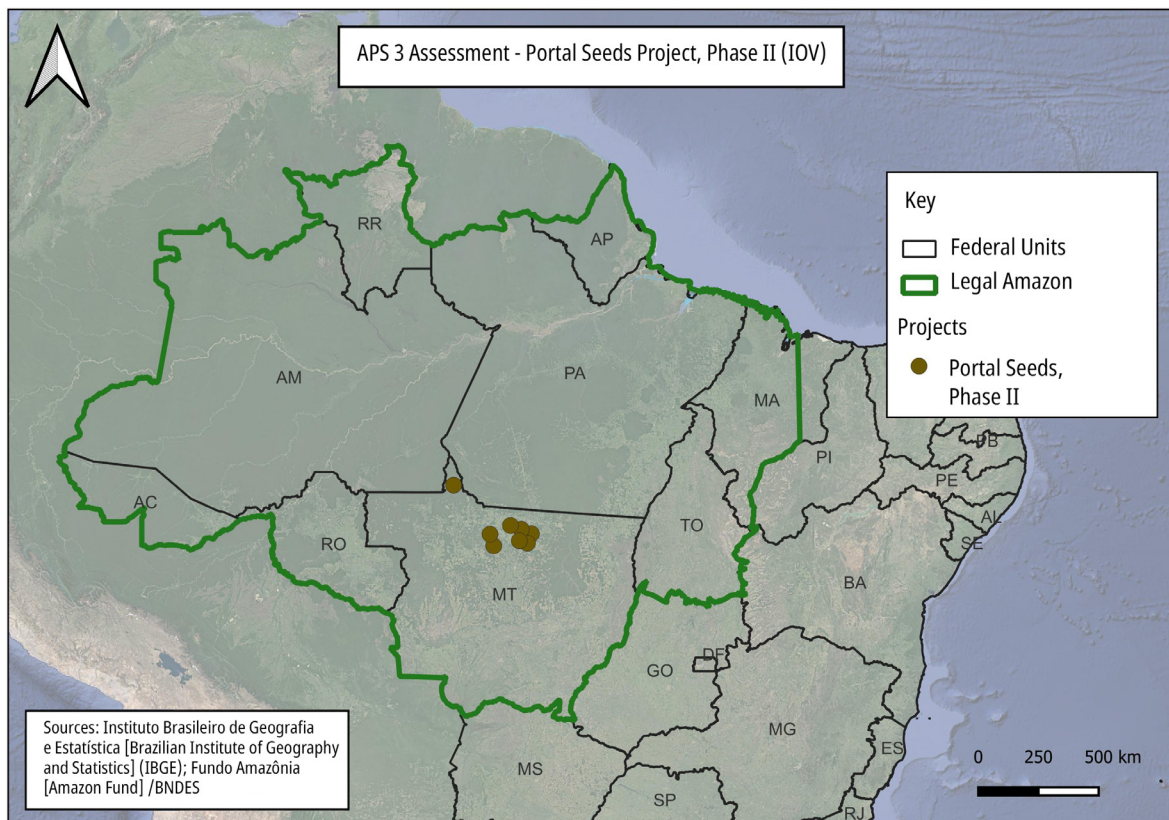
Source: Amazon Fund website, accessed on 28/Feb/24, available at <https://www.fundoamazonia.gov.br/pt/projeto/Sementes-do-Portal-Fase-II/>

1. Project Summary

Between 2010 and 2014, the Ouro Verde Institute (IOV) implemented the first project with the support of the Amazon Fund in the Portal da Amazônia region, in the state of Mato Grosso. In its first phase, the project involved actions to restore deforested areas through Agroforestry Systems (SAFs) and the revalorization of family farming in six municipalities in the region.

In its Phase II, carried out between 2014 and 2019 in the same region, the project expanded the environmental recovery of degraded areas following the methodology used in its first phase, including the insertion of species of economic interest in part of the areas already recovered.

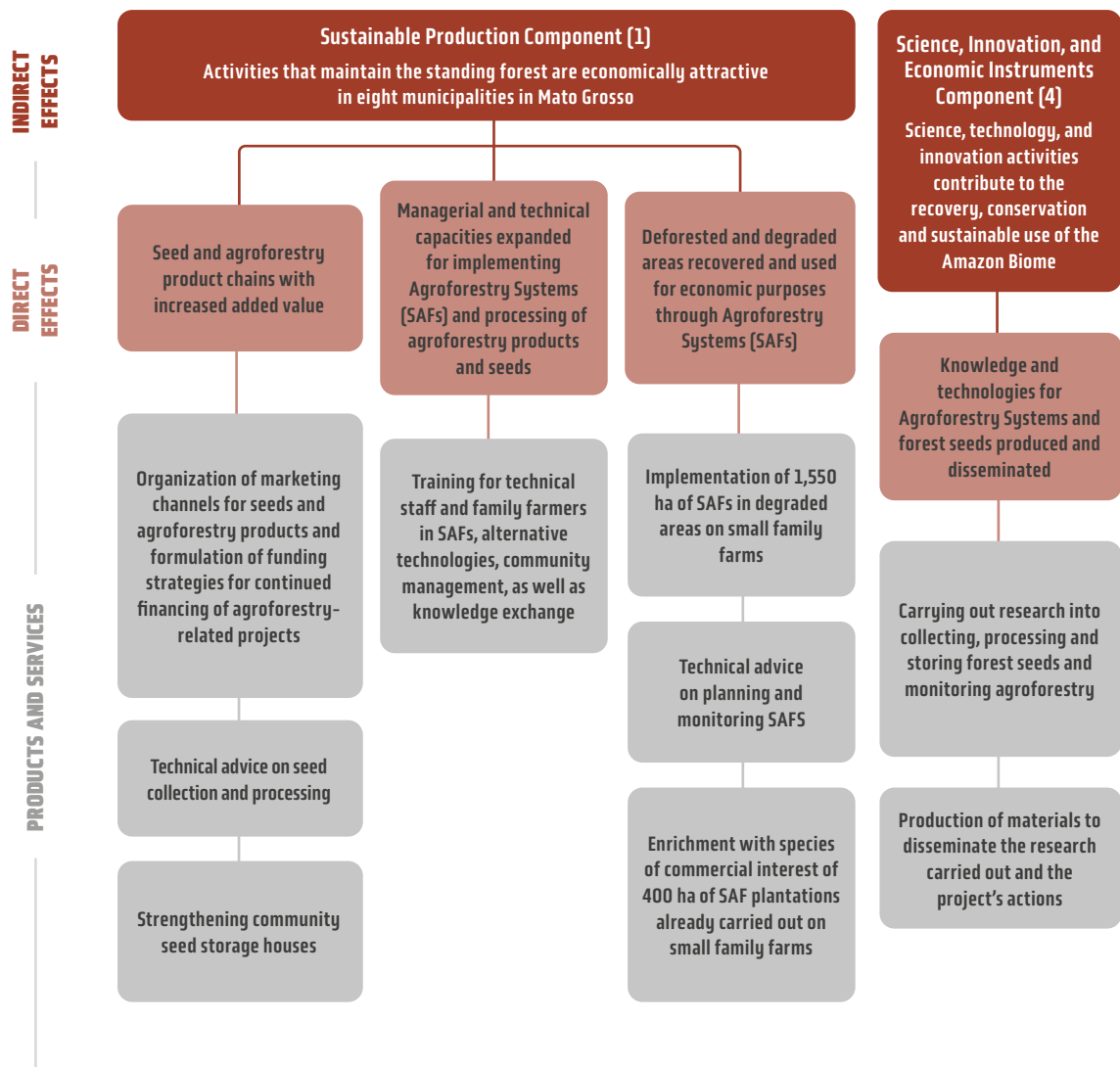
The development of marketing channels for forest products and the consolidation of the Amazon Portal Seed Network (RSPA) were also encouraged. In addition, the project consolidated the formation of a research network focused on the collection, processing and storage of seeds, the monitoring of agroforestry and local adaptations for the practice of silvopastoral systems, which work in cooperation with producers, responding to their needs in the field.



2. Intervention Logic

The *Portal Seeds – Phase II* project is part of the “Sustainable Production” (1) and “Science, Innovation, and Economic Instruments” components (4) of the Amazon Fund’s Logical Framework. The project’s logical framework, agreed with the funder, is shown in **Figure 1**.

Figure 1 Logical Framework of project *Portal Seeds – Phase II*



Source: Amazon Fund.



Photo: Juliana Mello

Group interview with the IOV technical team.

3. Specific Methodology


This evaluation sought to analyze if the results achieved during the implementation period of the project *Portal Seeds - Phase II* continued in force, as well as the outcome of these results and their impacts, years after the implementation.

In the preparation phase of the analysis, data was collected from secondary sources, including project documents shared by the BNDES, public data and institutional materials made available by the institution responsible.

For active data collection, a field mission was carried out in April 2024, in the municipalities of Alta Floresta, Carlinda, and Colíder. During the mission interviews were held with 28 people, including representatives of beneficiary families, the board of the Seed Network, the project coordination, and the local technical team. Some interviews were individual, but most were group interviews. Six properties directly involved were visited: (i) in the implementation of restoration areas in their various models - agroforestry systems, recovery of permanent preservation areas, silvopasture -; (ii) in participation in the Solidarity Marketing System (SISCOS); (iii) as collectors in the Seed Network.

4. Project implementation context

The Ouro Verde Institute (IOV) is a civil society organization based in the municipality of Alta Floresta, in the state of Mato Grosso. Founded in 1999, it has been operating in the region known as the Portal da Amazônia since 2004. This region is located in the far north of Mato Grosso, at the initial limits of the Amazon Rainforest, and is characterized by a high concentration of



family farming and settlements and a low human development index (HDI) and economic dynamism. IOV is mainly made up of professionals in the field of agricultural sciences and family farmers, who are statutorily part of the institution through the Base Groups.

The *Portal Seeds* offers a unique case of learning for the Amazon Fund, which is the possibility of realizing the effects of the continuity of a project. This analysis, however, must take into account the context at the end of Phase II. In the midst of finalizing the execution and celebrating the results achieved, the covid-19 pandemic occurred. At that time, the discontinuation of Amazon Fund financing was consolidated, ending the prospect of Phase III. There was also a loosening of actions to command and control illegal deforestation and the growth of agribusiness in the region, with the incorporation of family farming.

5. Evaluation of the Results

This section summarizes the results achieved based on the framework of indicators systematized by the project in the Monitoring Plan. It is worth mentioning that no targets were set for some of the indicators, limiting quantitative analysis.

As mentioned in the methodology, the evaluation comments highlight the permanence and outcome of the results some years after implementation. The discussion of the results follows the sequence and structure of the grouping of indicators defined in the project's Monitoring Plan.

DIRECT EFFECT 1. Seed and agroforestry forest product chains with increased added value.

DIRECT EFFECT 2. Managerial and technical capacities expanded for implementing Agroforestry Systems (SAFs) and processing agroforestry products and seeds.

DIRECT EFFECT 3. Deforested and degraded areas recovered and used for economic purposes through Agroforestry Systems (SAFs).

Indicator	Goal	Indicators at the end of the project (4th quarter 2019)	Change
Revenue from the sale of agroforestry products	N/A	BRL 6,953,315.57	N/A
Revenue from the sale of seeds	N/A	BRL 102,940.97	N/A
SAF area supported by the project for economic purposes	1,550 ha	1,550 ha	100%
Number of individuals trained in SAF and alternative production technologies effectively using the techniques and knowledge acquired	N/A	32%	32%
Number of individuals benefiting directly from the project	8,050	8,246	102%
Number of women directly benefiting from the project	N/A	3,905	N/A
Number of settlers benefiting directly from the project	N/A	357	N/A
Total number of families benefiting directly from the project	N/A	2,749	N/A
Number of women in management or coordination positions at IOV	3	4	133%

Integrated strategy and public

The first set of indicators portrays the integrated strategy used in the Ouro Verde Institute's approach: **promoting forest restoration and agroforestry, inducing demand for forest seeds, and structuring marketing mechanisms**, both for seeds and agroforestry production. At the end of the project, with the reduction in funding and the pandemic, **there was an interruption and, subsequently, an adaptation of the proponent's strategy**, as will be discussed in each direct effect of the project below.

These indicators also provide information on the magnitude of the *Portal Seeds - Phase II* project. Historically working with family farming, the *Portal Seeds* project has made it possible to **expand the number and profile of families supported by IOV**, as expressed in the figures presented. With a view to restoring the landscape, the project also involved livestock farmers who were motivated to recover springs and permanent preservation areas, thus strengthening the connectivity of forest fragments. Although IOV continues to work in the same municipalities as the project, the audience has been reduced. **Today, there are around 120 families served**, especially those that make up the IOV Base Groups.

Women

From the outset, the project **actively sought the participation of women**. Noting the limitations, the project adopted measures to **create conditions for women's participation**, such as childcare spaces during the events (called *ciranda*) and hiring cooking and cleaning services from outside the group of beneficiary families.

Considered “a small but fundamental effort”, these measures have generated significant results, with 47% of participants being women. Although there is no comparative data with the first phase of the project, when these measures were not adopted, the result is highlighted among the indicators.




Photo: Juliana Mello

Interview with women family leaders.

Some of the women interviewed mentioned **not wanting to take on “positions”**, such as the local coordination of seed houses, for example. Some consider themselves capable, others have reported literacy limitations, but overall they say it would be “one more activity” to be done, leading to **overload**.

My husband is the coordinator, but in practice I do even more than he does. But I don't want to take it on, it's another burden for us who already do so much: house, children, meetings...

— Beneficiary, family farmer, and seed collector.



In the management of the Seed Network, the willingness to take on the challenge of formal leadership came recently, in 2023. The new board of the recently created cooperative is **made up of three women and one man, and on the board there are three men and three women**, some of them farmers and previously part of the project's technical team. This is a new thing and still make collectors feel uncertain about it, due to the position of power that women are assuming.

It was the cooperative's first assembly with a ciranda for the children. Considering that we have few resources to hold meetings, there is a bit of a struggle to prioritize how to spend the money. The action is small but fundamental, it creates a climate in which the child is allowed to be, welcomed as part of the family. — Women of the cooperative

In all the properties visited, the direct involvement of women in the implementation and management of the areas was noticed as a **working force**. The role of women in **decision-making** in relation to land use and income, however, is not so evident, requiring other methods of investigation.

The *Portal Seeds* project had no actions to **identify and meet the specific needs of women in order to reduce income inequalities**. The project also supported existing initiatives, such as the Strong Women Network. In the Seed Network, women made up 46% of the base and now there are **56% of women among the active collectors**.

After the project, with support from the REDD for Early Movers Program (REM MT Program), the University of Exeter and ISPN/PPP-ECOS, IOV expanded its work with women, advising the Association of Women in Family Farming of the Portal da Amazônia (AMAFPA) on aspects of organization and management of pequi processing.

*The calls for projects were geared towards actions with women. And this has always been the team's vision. Things got together.
— Technical team.*

Some of the families visited were led by women and, in these cases, it can be seen that outcomes of the project, such as the Raiz Bank, are **facilitating women's access to better production conditions**.

If it wasn't for Raiz Bank I wouldn't be able to access credit because I don't have a guarantor (I don't meet the requirements).

— Beneficiary, family farmer, and seed collector.



Photo: Débora Almeida

Barn financed by Raiz Bank for a dairy farmer in a silvopastoral system.

DIRECT EFFECT 1. Seed and agroforestry forest product chains with increased added value.

Indicator	Goal	Indicators at the end of the project (4th quarter 2019)	Change
Product 1.1: Organization of marketing channels for seeds and agroforestry products.			
Revenue from the sale of agroforestry products through government purchases	N/A	BRL 3,392,552.55	N/A
Revenue from the sale of agroforestry products on the local market, not including government purchases	N/A	BRL 3,318,741.77	N/A
Revenue obtained by selling agroforestry products outside the local market, not considering government purchases	N/A	BRL 242,021.25	N/A
Revenue from the sale of forest seeds on the local market	N/A	BRL 73,399.95	N/A
Revenue from the sale of forest seeds outside the local market	N/A	BRL 110,480.08	N/A
Number of fairs to promote agroforestry products held	15	25	167%
Report on fundraising strategy for continued financing of agroforestry-related projects	N/A	2	N/A



Indicator	Goal	Indicators at the end of the project (4th quarter 2019)	Change
Product 1.2: Technical assistance for seed collection and processing			
Number of families benefiting from technical assistance for seed collection and processing	120	635	530%
Product 1.3: Strengthening community seed storage houses			
Number of seed houses built	7	5	%
Number of seed houses renovated	14	13	93%
List of equipment purchased by seed houses	N/A	-	N/A



Photo: Juliana Mello

Frozen fruit and pulp producer.

Marketing and income

As is typical of family farming, income is made up of various activities. In the case of the project’s beneficiaries, dairy cattle predominate, but seeds, legumes, vegetables and fruit have gained an important role with the project’s support.

*Life has improved 100%. I built my house, bought furniture.
 – Beneficiary, family farmer, and seed collector*

The Carlinda fruit pulp cooperative was supported by IOV and has remained an important agent for marketing fruit from the SAFs (**Product 1.1**).

I make some pulp for SISCOS, but my flagship product is the frozen fruit I sell to the cooperative. The first freezer I bought with seed money, the second came from the fruit, and I kept expanding.

— Beneficiary, family farmer, and seed collector.

The project team advised on public procurement in all the municipalities (**Product 1.1**). Currently the IOV does not work in this area, and the **institutional market has been accessed** through associations or directly by the families with the town halls, possibly with some loss of effectiveness.


We have contracts through the association, but there have been problems of interruption due to the inexperience of the board.

— Beneficiary, family farmer.

During the project, marketing points were set up, known as “fairs”, which brought producing families closer to consumers (**Product 1.1**). The “fairs” took a variety of forms, from taking part in the town’s open-air fairs to a differentiated stall with the project’s identification installed in strategic locations in the eight municipalities where the project operates. Some were sporadic, at events, and others permanent, totaling 25 over the course of the project. All “fairs” have been suspended during the pandemic and are being **resumed in two municipalities**. In Alta Floresta, IOV recently obtained the concession of the Casa do Artesão in the town’s central square for this purpose.

The fairs were a showcase for the project and family farming. One of the first effects of the pandemic fell precisely there. We lost them all. Remobilizing would be almost like starting from scratch. We’ve been working on strengthening SISCOS ever since. — Technical team.

The Solidarity Marketing System (SISCOS) was created by IOV in 2008 as a way of selling products online. The initiative was supported by the project through advice and training (**Product 1.1**). In 2021, it was expanded and currently operates in four municipalities (Alta Floresta, Nova Canaã, Colíder, and Carlinda), representing IOV’s main marketing strategy for family produc-



tion from SAFs and vegetable gardens after the project. The range of products marketed is wide and flexible, making it an inclusive model for different family profiles.

For SISCOS I sell a bit of everything and whatever else I can think of. It's my main sales channel, customers like my products. It's an important income in addition to retirement.

— Beneficiary, family farmer.

Currently, SISCOS has 4,000 registered consumers, around 700 of whom are active. In 2023, the System generated BRL 130,000 in sales, benefiting about 24 producing families, who earn a monthly income between BRL 800.00 and BRL 1,500.00. The maintenance of SISCOS depends on projects, but part of the operating costs are covered by an administrative fee (15 to 25% of the value of the product).

The marketing strategies used in the project were strongly affected by the pandemic and the discontinuation of funding for the project. But it is possible to say that the results achieved during the project, such as fairs, access to institutional markets and the strengthening of SISCOS, were the basis for **solutions carried out by the families themselves and by local cooperatives** after the project ended.

Forest seed chain

The Amazon Portal Seed Network (RSPA) gives its name to the project. The second phase saw the expansion of infrastructure, diversification and improvement of seed quality, as well as the strengthening of the Network's governance (**Product 1.3**). During the execution of the project, the RSPA had 120 collectors (**Product 1.2**), but has seen an **18% reduction in members** since then, and now has 98 active collectors, 55 women and 43 men.

The Seed Network is the great link that keeps the communities connected and nurtures the family spirit that was built up during the project.

— Technical team.



Diversity of seeds collected by the interviewed family

During the implementation period, the project itself was the main buyer of the seeds marketed by the Network. These seeds were used in restoration activities in Permanent Preservation Areas (APPs) and production systems. Immediately after the end of the project, therefore, there was a reduction in demand for seeds. But through a commercial insertion that had already been built (**Product 1.1**), added to the articulation with the Redário¹, the Network has been expanding its sales, boosted by other projects such as the PPP-Ecos Project, the REM-MT Program, and the Copaíbas Project. This has made it possible to maintain the Network, which in 2023 generated BRL 318,000 in sales, generating an average income of BRL 3,000 per family.

A milestone in the Seeds Network's trajectory was its institutionalization as a cooperative in 2016 (**Product 1.2**). Formerly known as Cooperguarita, in 2023 it was renamed Cooperativa Solidária da Agricultura Familiar (Coopersaf), which, from the same year, elected a directorate led by women.

Small subsequent projects with the Amazon Fund made it possible to draw up a business plan, make progress on pricing and build a Regional Seed House in Alta Floresta, to facilitate storage and speed up sales. The new infrastructure is already proving too small to meet demand. Of the 18 Community

¹ The Redário brings together 24 networks and groups of seed collectors from all over Brazil, offering support in the production of native seeds and boosting the market.



Photo: Juliana Mello

Team interviewed at the central seed house.


Seed Houses implanted, 16 are active, some of them requiring an expansion of the working area.

Quality control is collective, but we're limited on space, so we need a balcony to work together in the seed house.
— Beneficiary, family farmer, and seed collector.



Photo: Juliana Mello

PDS São Paulo community seed house.



The collection system in the RSPA has developed little in the way of seed extraction in the forest, due to access difficulties and the need for specific climbing skills. Some species are already collected in recovered APPs, but the restoration model was not designed with this in mind. More work is done on the collection of isolated matrices and on the forest orchards set up by the project in backyards, which is easy in the context of an aging population and the expansion of agribusiness, where many matrices located on third-party farms have been lost as a result of leases for soya plantations.

The seed represents my Christmas bonus. I have my matrices mapped out here and at the homes of relatives who I educate not to cut them down. At the time, I see and harvest.

— Elderly beneficiary, family farmer, and seed collector.

Microcredit

The project provided for the development of a fundraising strategy for continued financing of projects related to agroforestry. This activity resulted in the **initial design of a solidarity credit line (Product 1.1)**. Named **Raiz Bank**, it is today one of the main strategies for generating financial autonomy for actions with families.

I only have credit because there's the Raiz Bank, I can't access PRONAF because I don't have a guarantor. I'll want another project, but I want to discuss the silvopastoral model, so I can do it my way.

— Beneficiary, family farmer.

The fund started with BRL 50,000 and now has BRL 650,000, raised through donations from the University of Exeter in the UK and the REM/MT Program. The decision-making process for granting financing is carried out by 11 Credit Evaluation Committees (CACs) operating in nine municipalities. The Institute's plan is to set up a fund of BRL 1 million, with the consolidation of 15 CACs.

To access the credit, producers need to meet a series of criteria that seek to safeguard social cohesion and environmental protection, which include (i) active participation in the community and (ii) practicing sustainable land use and recovering the APP. Currently, the average credit project accessed by

Raiz Bank is BRL 9,000 per family. The resources have been used to invest in improvements to production and processing, such as fences, milk tanks, milking parlors, and freezers for fruit.

Because it does not require a guarantee or guarantor, has an easy access process and is part of a broader strategy to support producers, Raiz Bank's credit stands out as a crucial financial solution for sustainable rural development in the region, enabling investments that could not have been made in its absence. The prospect of gaining scale also contributes to increasing its impact in the medium and long term.


DIRECT EFFECT 2. Managerial and technical capacities expanded for implementing Agroforestry Systems (SAFs) and processing agroforestry products and seeds.

Product 2.1 Training of technical staff and family/farmers

Indicator	Goal	Indicators at the end of the project (4th quarter 2019)	Change
Product 2.1: Training of technical staff and family/farmers			
Number of individuals trained in SAFs, alternative technologies and community management of agroforestry projects	424	2,352	555%
Number of young people trained in social mobilization for participatory management of agroforestry projects	70	71	101%

Training and Governance

The training activities have expanded important **know-how skills** for a new form of land use, but above all, they have created a **social base for participatory project management** by strengthening various collective information and decision-making spaces, such as: local councils, marketing groups, seed houses and regional strategies, such as the general council the Seed Network (**Product 1.2**). These environments were considered fundamental to creating an atmosphere of control, transparency, monitoring, collective learning and valuing family farming.



At the height of the project, we were able to gather 700 people at one meeting. The project has led to agroforestry intense activities.

— Technical team.

IOV continues with its participatory structure, involving Base Groups that make up the organization by statutes. Since the end of the project, the continuity of the actions has been made possible by **projects considered to be one-offs** in terms of territorial scope, theme and beneficiary public when compared to previous major projects.

The project's local councils **functioned as experiments in territorial governance**. Currently, the Credit Evaluation Councils (CAC) make it possible to continue this **exercise of participatory management**, although they have a smaller scope.

I had no idea how decisions were made. Ever since I joined the CAC, I've understood the importance of taking part.

— Young farmer, member of the Credit Committee

Technical Assistance and Rural Extension [ATER]

The **Technical Assistance and Rural Extension (ATER) model** adopted in the project (**Product 2.1**) favored collective moments: workshops, training, exchanges and community work. Only in the initial phase of designing the production systems were there individualized visits. Even today, IOV continues to work in the same way, but the **learnings** point to ATER with greater involvement of young people from the communities, so that the management stages can be monitored more individually and efficiently.

With the project we saw the value of community effort: one day can transform the system. We're continuing to work in this way, but the plan we have for the future is for young people to work as community agents, monitoring the day-to-day life of the communities.

— Field technician

The project was organized with a technical team for each municipality, coordinating the different fronts of the project according to each context. The members of the team, both men and women, were appointed by the

local management councils (now the Credit Committees), guaranteeing a relationship of greater proximity and trust with the beneficiaries, who engaged more easily with the productive transition proposals.

Although the team was greatly reduced after the end of the project's activities, the research and credit initiatives currently have **people trained and qualified** by *Portal Seeds*, favoring **institutional learning**.

DIRECT EFFECT 3. Deforested and degraded areas recovered and used for economic purposes through Agroforestry Systems (SAFs).

Indicator	Goal	Indicators at the end of the project (4th quarter 2019)	Change
Product 3.1: Implementation of 1,550 ha of SAFs			
Number of rural properties with SAF projects	1,300	777	60%
Area of SAF planted with project resources	1,550 ha	1,550 ha	100%
Product 3.2: Enrichment with species of commercial interest			
Area of SAFs enriched with productive species	400 ha	400 ha	100%
Product 3.3: Technical advice on planning and monitoring SAFs			
Number of families benefiting from technical assistance for SAFs	1,300	777	60%

The project expanded the scale of IOV's work, as expressed in the number of families and hectares restored and SAFs enriched (**Products 3.1 and 3.2**). The number of families is significant, although it was below the targets. IOV clarified that the targets were considered to have been overestimated: it was initially considered that each benefited property would receive a project action, disregarding the fact that not every beneficiary who took part in the workshops and mobilizations would be interested in restoring degraded areas. Of the total rural properties served, 46% were settlement areas and 54% private properties, of which 74.5% have the Rural Environmental Registry (CAR).

The expansion of agribusiness has put pressure on property rents. The IOV team **estimates that between 30% and 40% of the families assisted by the project have leased their land**, especially outside the settlements.

But there is no data to back up this perception. The team evaluates that the **families involved in income-generating activities, such as seeds and agroforestry production, rented less** than those who only restored APPs. In addition, there are reports that restored APP areas are not being included in the lease because their value is recognized in terms of maintaining environmental services, especially the protection of springs. For the purposes of this evaluation, families of different profiles were visited for whom the APPs are a source of pride and the effects of preserving springs are visible.

I wanted to restore my APP, I had tried it myself, but the seedlings died. I joined this project for a cause. In our region, the time is coming when there won't be a stick left to make a fence, people are tearing everything down to put up soybeans. My APP is all preserved, and the water in the slope has become stronger and no longer dries up all year round.

— Small farmer, beneficiary of the project.

I didn't know anything about APP, I was used to my father's system, which was to take everything down. I love my field, I did everything to the letter, as I was taught. People gather here to worship, it's a different atmosphere inside. —Beneficiary, family farmer.

The intensity of action expressed in the figures was not maintained after the end of the project, but the Institute continues to work to restore areas. Data systematized by the organization show that there was an **increase in restored areas of around 200 hectares** between 2021 and 2023 (**Product 3.1**), especially APP areas.

What sparked the desire to restore was seeing the area of acquaintances.

— Project beneficiary.

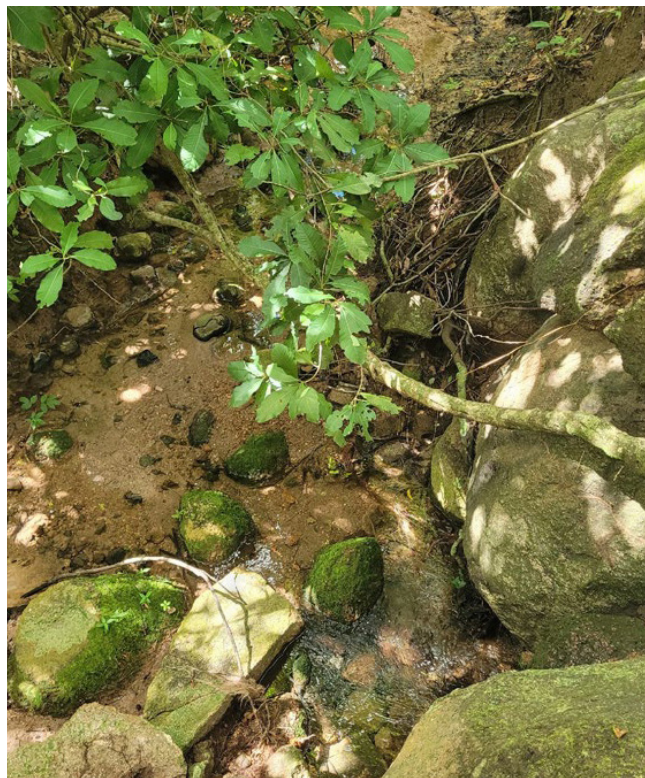


Photo: Débora Almeida

Spring protected by APP restored.



Following the completion of the project, the restoration models implemented have been **integrated into production systems**, some of them **through funding from the Raiz Bank**. The models are defined based on the family's needs and motivation. In general, the combination of SAFs with investments from Raiz Bank has generated an increase in income and quality of life for its beneficiaries, who have built houses, bought furniture and appliances, increased their food security, and invested in education for their children.

The **silvopastoral systems** have been the most widespread model, covering 90% of the area mentioned and involving 50 families. The aim is to integrate restoration with dairy farming, an economic activity that is central to family farming in the region. The implementation involves picketing the pasture with an electric fence and planting strips of trees combined with agricultural species. The models have been refined in close conjunction with the research activities carried out at the Federal University of Mato Grosso (UNEMAT), the University of Exeter and other partner universities. In the same logic of integrating restoration into the production systems prioritized by the families, **forest gardens (for seeds), fruit trees and, agroforestry gardens were planted**, representing 10% of the area (20 hectares) involving 12 families.



Photo: Juliana Mello

APP restored.



Component 4: Science, Innovation, and Economic Instruments: Science, technology, and innovation activities contribute to the recovery, conservation, and sustainable use of the Amazon Biome.

DIRECT EFFECT 4. Knowledge and technologies for Agroforestry Systems and forest seeds produced and disseminated.

In addition to the Sustainable Productive Activities component, the *Portal Seeds* project was structured with direct effects on Component 4: Science, Innovation, and Economic Instruments, which brings together actions aimed at research and communication. .



Photo: Juliana Mello

Silvopastoral system under implementation.

Indicator	Goal	Indicators at the end of the project (4th quarter 2019)	Change
Number of scientific, educational, or informative publications	5	59	1,180%
Number of integrating events held	5	6	120%
Number of participations in integrating events aimed at disseminating the knowledge produced	N/A	17	N/A
Amount invested in CT&I infrastructure	BRL 35,500.00	BRL 255,497.50	7,300%
Number of researchers and technicians involved in CT&I activities residing in the Amazon region	N/A	59	N/A
Product 4.1: Carrying out research into seed collection, processing and storage and monitoring			
Number of surveys carried out on agroforestry monitoring	5	15	300%
Number of studies carried out on seed collection, processing, and storage	5	49	980%

Indicator	Goal	Indicators at the end of the project (4th quarter 2019)	Change
Product 4.2: Production of materials to disseminate the research carried out and project actions			
Number of printed materials produced, such as newspapers, booklets, and research reports	N/A	27	N/A

The communication actions took place in an integrated manner with governance, contributing to **transparency** in the application of resources and supporting decision-making processes in the project's collegiate bodies (**Product 4.2**). Currently, there are no regular **institutional communication tools**, and the flow of information happens through the actions of technical teams, workshops and events.

The project made it possible to structure the research area at IOV far beyond the construction of a physical space for accommodation and events (**Product 4.1**). **A network of researchers from various national and international institutions (State University of Mato Grosso - UNEMAT, Federal University of Mato Grosso - UFMT, University of Exeter, University of Florida...)** has been established, who have directed their actions towards meeting the demands of family farming in the region.

Research is perhaps the area that has grown the most at IOV. We have projects providing information to improve production systems, train students and disseminate research.

— Technical team

After the project was completed, research activities were expanded with the approval of new projects in partnership with universities. The **researches directly benefit the families already in the implementation phase of experiments**, modeled in a participatory way. Research results have **contributed to both the design of production systems and the seed network**, as well as pricing, collection and storage practices (**Product 4.1**). Students regularly participate in activities with families, contributing to the **development of professionals** with more knowledge about the reality of family farming. Events to present and discuss results are held with the **participation of students, families, and researchers (Product 4.1)**.

6. Analysis of the OECD Evaluation Criteria and REDD+ and Cross-Cutting Safeguards

6.1. Analysis of the OECD Evaluation Criteria

Evidence	Evaluation
RELEVANCE CRITERION	
<ul style="list-style-type: none"> The project developed restoration models for a region with high deforestation pressure and irregular environmental properties, providing access to information and references on the recovery of APPs and the implementation of SAFs. The income-generating activities have been consolidated; both agroforestry and seed production are significant and contribute to the composition of income in the context of family farming. The effects remain after the end of the project and contribute to the resilience of family farming in a context of strong pressure to lease areas and convert them into soy monocultures. 	Relevant
EFFECTIVENESS CRITERION	
<ul style="list-style-type: none"> One of the main factors that seems to have influenced the achievement of the goals was the integrated action involving not only the implementation of areas but also the structuring of marketing, being associated with an intense and consistent process of technical assistance, training, and governance. 	Effective
EFFICIENCY CRITERION	
<ul style="list-style-type: none"> A governance process structured through municipal and regional participatory bodies, with instruments and procedures for transparency and co-responsible decision-making between beneficiaries and executors. Financial mechanisms implemented to optimize resources. The management arrangement resulted in relatively low restoration costs. 	Efficient
IMPACT CRITERION	
<ul style="list-style-type: none"> It has enabled changes in the landscape through the restoration and enrichment of a significant area of APPs and SAFs. Consolidated the seed chain for restoration, structured agroforestry production, and strengthened marketing channels. It has generated production and restoration models, systematized and disseminated knowledge through participatory research. The results achieved in terms of landscape change are under strong threat from the expansion of predatory agribusiness, which has reportedly deforested areas that had already been restored. 	Positive impacts
SUSTAINABILITY CRITERION	
<ul style="list-style-type: none"> It has consolidated the seed chain for restoration, with the formalization of a cooperative and a significant group of collectors, who remain mobilized and active even after the end of the project. Joining the national movement of community seed networks. Challenges of expanding the market. The microcredit mechanism structured by the project is expanding, making it possible to expand restoration through models integrated with production and income generation: silvopastoral, orchards, and agroforestry gardens. Research projects expanded and enabling the continuity of actions with the Base Groups of the executing organization The lessons learned are guiding the continuity of actions through new projects by the executing organization in the territories. 	Relevant sustainability

6.2 Analysis of the Cancun Safeguards

Safeguard	Attendance	Notes
1. Actions complementing or consistent with the objectives of national forest programs and other relevant international conventions and agreements	Yes	This project contributes directly to PPCDam and, more specifically, to the expected results: 1.1 Bioeconomy, socio-biodiversity, agroecology and agroecological transition expanded and strengthened in the Amazon; 1.2 Training and capacity building of personnel and infrastructure for socio biodiversity chains and sustainable family farming improved (Objective 1: Stimulate Sustainable Productive Activities) and 2.2 Recovery of native vegetation in public and private areas stimulated (Objective 2: Promote Sustainable Forest Management and the recovery and restoration of deforested or degraded areas).
2. Transparent and effective national forest governance structures, taking into account in view of national sovereignty and national legislation	No	There were no specific contributions from the project to this aspect at the national level.
3. Respect for the knowledge and rights of Indigenous Peoples and members of local communities, taking into account international obligations relevant national circumstances and laws and noting that the UN General Assembly has adopted the UN Declaration on the Rights of Indigenous Peoples	N/A	The project did not target Indigenous Peoples, but worked with farming families in settlements and private areas.
4. Full and effective participation of interested parties, in particular Indigenous Peoples and local communities, in the actions referred to in paragraphs 70 and 72 of Decision 1/CP 16	Yes	The project structured a system of governance, including participatory bodies at the municipal and regional levels, instruments and procedures for transparency and co-responsible decision-making between beneficiaries and executors. In the interviews, the beneficiaries demonstrated a broad understanding of the project's results.
5. Actions consistent with the conservation of natural forests and biological diversity, ensuring that the actions referred to in paragraph 70 Decision 1/CP 16.11 are not used for the conversion of natural forests, but rather to encourage the protection and conservation of natural forests and their ecosystem services and to improve other social and environmental benefits	Absolutely	The project developed and implemented models for recovering degraded areas for ecological (APPs) and economic (SAFs) purposes using native species and consolidating the forest seed chain for this purpose.
6. Actions to address the risks of reversals in REDD+ results	N/A	Not applicable.
7. Actions to reduce the shift of carbon footprint to other areas	N/A	Not applicable.

6.3 Analysis of Cross-Cutting Criteria

Criterion	Attendance	Notes
POVERTY REDUCTION		
<ul style="list-style-type: none"> • To what extent has the project contributed effectively to economic alternatives that value the standing forest and the sustainable use of natural resources? • To what extent has the project positively influenced the reduction of poverty, social inclusion and improvement of the living conditions of beneficiaries (in particular: traditional communities, settlements and family farmers) who reside in the area of the project activities? • Has the project succeeded in promoting and increasing production in value chains of timber and non-timber forest products originating from sustainable management? 	Absolutely	<p>Family farming is characterized by a mix of complementary income-generating activities. In this sense, the project has consolidated productive activities that make a significant contribution to family income.</p> <p>It should be noted that these strategies are inclusive of different family profiles, including women, the elderly and young people.</p>
GENDER EQUALITY		
<ul style="list-style-type: none"> • Has the project succeeded in integrating gender issues into its strategies and interventions or addressed the issue in an independent way? How? • Was there separation by gender in data collection for project planning and monitoring? • How did the project contribute to gender equity? 	Yes	<p>The project created the conditions for women to take part in the activities, providing childcare space. The team was made up of men and women, broadening the possibilities for direct dialog with women.</p> <p>The results of reaching women with benefits were maintained after completion. The percentage of women beneficiaries as collectors of the seed network and taking up management positions in the cooperative has increased.</p> <p>The strategies for the agricultural production marketing created by the project directly benefit women, although there is no systematized data on this impact.</p>


7. General Evaluation

Positive aspects

- The project has consolidated the forest seed chain. The incubation carried out by IOV during the execution of the project created the conditions for the **Seed Network to achieve autonomy**. Commercial challenges are inherent to the process, and reinforce the importance of continuity of support. National coordination with other community networks shows progress.
- In the case of agroforestry production, the structuring of the production link plus training and governance efforts were the basis for **marketing solutions led by the families themselves and by cooperatives locally**.
- The **income generation** activities supported by the project, seeds and agroforestry production, are active and valued, consolidating themselves as strategies in the composition of family income.
- The **restoration** continues to be supported by IOV, prioritizing **models integrated with income generation**, such as silvopastoral, orchards, and agroforestry gardens.
- The project has taken a few steps forward on the long road to gender equality. It was possible to **reach women**, creating better conditions for participation and generating **direct benefits**, such as income and access to credit.
- The **microcredit** created the conditions for **continuing restoration actions** associated with income generation. The model created under the project and subsequently expanded by IOV has proven to be **facilitating access to better production conditions for women**.
- **The research network catalyzed by the project has expanded** to include several national and international institutions that have directed their actions towards meeting the demands of family farming and contributing to the professional development of students in the region.

Challenges

- The *Portal Seeds* project enabled an integrated approach, with several simultaneous fronts, characterizing a “period of intense agroforestry activities” in the region, with significant economic, environmental, and



social organization results. The projects that followed the Amazon Fund did not have the same territorial, thematic or beneficiary public scope, **but were more specific**. On the other hand, in the same period there was **strong pressure to lease areas for soybeans**.

- Despite the results of inclusion and benefits for women, the exercise of formal leadership, by **occupying spaces and positions of power**, encountered cultural constraints, often related to the division of reproductive labor. Also, **combating gender restrictions** has been an intuitive act, much more due to the courage of the women at the forefront than due to well-founded, methodologically based strategies and adequate human and financial resources.
- After 10 years of partnership between IOV and the Amazon Fund, the suspension of Phase III of the *Portal Seeds* project, as well as the pandemic, has had repercussions for IOV's development.

8. Lessons Learned and Conclusion

- The *Portal Seeds* project has generated significant results that have contributed to the **resilience of family farming** in the region. However, the intensity of the expansion of agribusiness generates intense social, economic and cultural pressures, demanding broader processes of **territorial management/governance**.
- The **induction of gender issues in calls for proposals** is important to raise the issue internally in organizations. Creating the conditions for women's participation is a fundamental initial strategy, but it must be preceded by **consistent support from funders to combat gender restrictions** more systematically.
- Although it wasn't planned to meet women's **income needs**, the **seed chain proved attractive** in the context of a forest restoration project. The results achieved indicate the potential for more assertive actions in this direction in similar projects.



Por meio da:



MINISTÉRIO DO
**DESENVOLVIMENTO,
INDÚSTRIA, COMÉRCIO
E SERVIÇOS**

MINISTÉRIO DO
**MEIO AMBIENTE E
MUDANÇA DO CLIMA**

